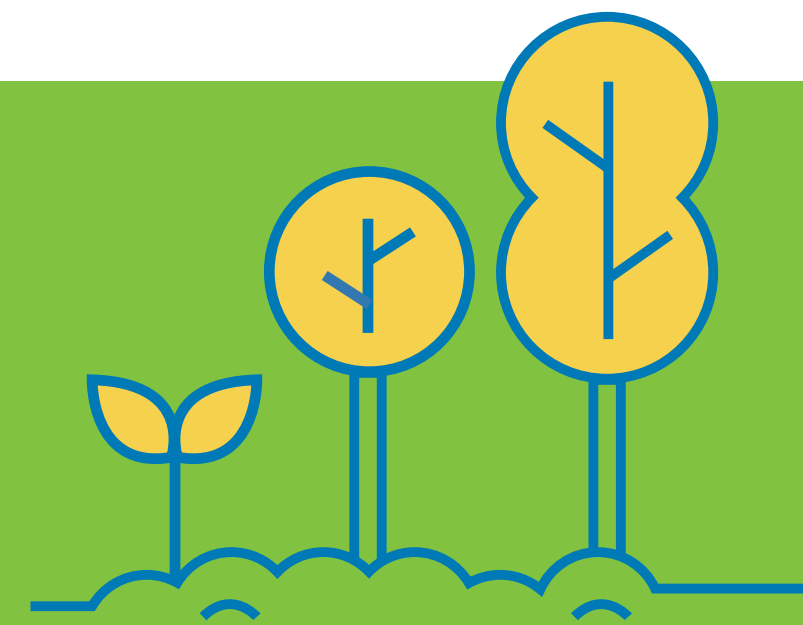


DESIGN STATEMENT

by Sam Keitch



Discover Nature's Beauty: A Sustainable Landscape at Subaru of America

Subaru of America partnered with the Pennsylvania Horticultural Society (PHS) in 2017 to create a stunning, environmentally sustainable, and naturalistic landscape on their Camden campus. As the seasons change, so does the beauty of this space so make sure to check this sign seasonally to see the design changes!

A Spring Awakening

Over thirty zones on the Subaru property have unique plant palettes of varying seasonal combinations, but the original Subaru planting had three classic perennials throughout. They are an announcement of spring, large drifts of dark purple, lilac blue, and yellow dot throughout the property.

One of these classic perennials on site is a rich purple selection known as *Salvia nemorosa* 'Caradonna'. Massed throughout the site, it is hard to miss its great concentration on Newton Avenue. PHS often utilizes 'Caradonna' as a backdrop for lesser catmint, *Nepeta x faassenii* 'Walker's Low' and its vivid blue flowers. Both can be cut back to encourage a second display towards the end of summer. Finally, a sulphur-toned yarrow, *Achillea* 'Moonshine' contrasts with its horizontally formed discs of potent yellow. These remain intact and upright long after the flowers fade. PHS encourages homeowners to try these three with two bulb varieties, *Camassia* 'Blue Danube' and *Allium* 'Ambassador'.

自然の美しさを発見: Subaru of Americaのサステナブルなランドスケープ

Subaru of Americaは、2017年にペンシルベニア園芸協会 (PHS) と協力し、カムデンキャンパスに、環境にサステナブルな自然重視の美しいランドスケープをつくりました。季節の移り変わりとともに、デザインも変わるのでぜひご覧ください!

春の目覚め:

Subaruの敷地内には30を超えるゾーンがあり、季節ごとにさまざまな組み合わせの植物が植えられます。濃い紫、ライラックブルー、黄色の定番多年草3つが敷地内に点在し、春の訪れを告げています。

敷地内の定番多年草のひとつに、濃い紫色のサルビア・ネモローサ「カラドンナ」があります。敷地全体に群生しており、ニュートン・アベニュー沿いにその素晴らしい濃さが目立ちます。PHSでは、キャットミント、ネペタ×ファッセニー「ウォーカーズ・ロー」と鮮やかな青い花の背景として「カラドンナ」をよく利用しています。どちらも刈り込めば、夏の終わり頃に2度目の開花をします。最後に、硫黄色の、ヤロウ・アキレア「ムーンシャイン」は、鮮やかな黄色の水平に広がる円形と対照的です。花が枯れても、そのままの形で長く残ります。PHSは、これらの3つの花を、2種類の球根植物、カマシア「ブルー・ダニューブ」とアリウム「アンバサダー」と組み合わせてみることを推奨しています。

SHARE AND TAG PHOTOS OF YOUR FAVORITE PLANTS!

@PHSgardening
#GardeningforGood

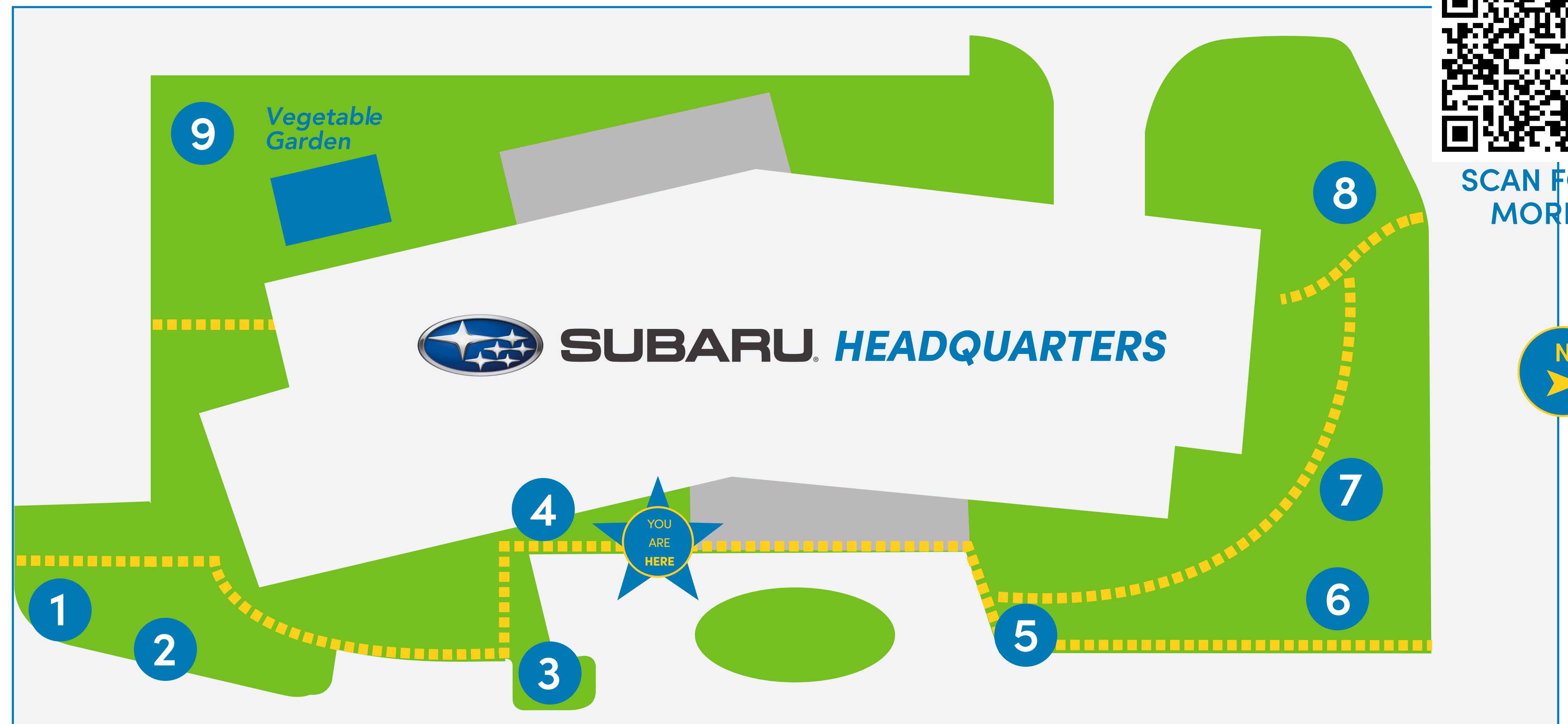
Gardens Powered by PHS



PENNSYLVANIA HORTICULTURAL SOCIETY®



SCAN FOR MORE



1
Geum 'Blazing Sunset'
Geum
Hybrid



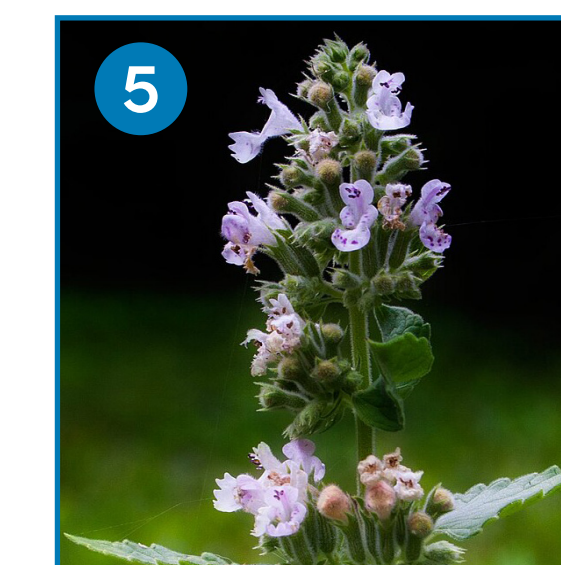
2
Salvia nemorosa 'Caradonna'
Sage
Native to Europe



3
Achillea 'Moonshine'
Yarrow
Hybrid



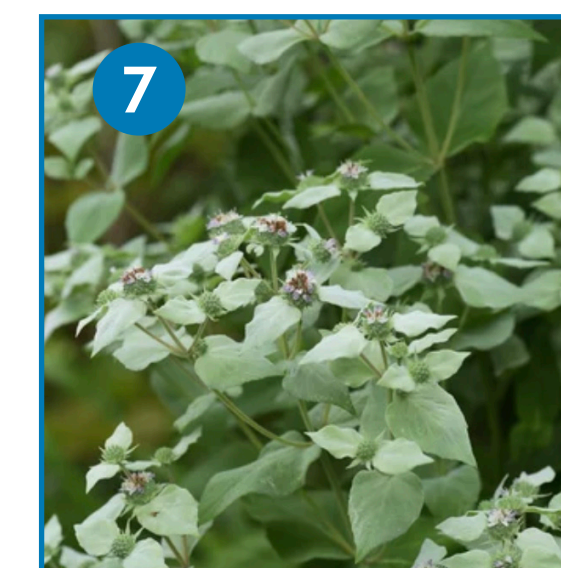
4
Itea virginica 'Henry's Garnet'
Virginia Sweetspire
Native to eastern US



5
Nepeta x faassenii 'Walker's Low'
Catmint
Hybrid



6
Stachys officinalis 'Hummelo'
Betony
Native to Europe & Asia



7
Pycnanthemum muticum
Clustered Mountain Mint
Native to Eastern US



8
Penstemon digitalis 'Husker Red'
Beardtongue
Native to Missouri



9
Asclepias incarnata
Swamp Milkweed
Native to NE & SE US



KEY



Sun



Partial Shade



Shade



Perennial



Annual



Pollinator



Gold Medal Plant